

CR-Scan Otter

Small to Large, Scan It, Make It

Various Size Options

Innovative Four-lens Stereo Vision

Proficient in handling both large and small scans.

Two sets of dual lenses, catering to details and various sizes

A set of long-focal dual lenses for scanning small objects, providing richer details; a set of short-focal dual lenses for scanning large objects, covering a wider range of sizes.

Capture SMALL & BIG Objects

The CR-Scan Otter realizes possibilities of scanning various objects, ranging in size from 10*10*10mm to 2000*2000*2000mm, from tiny coins to large vehicles, all covered in one scanner. The scanning distances range from 110mm³ to 1200mm³ to effectively capture items of versatile sizes.

Ultra-High Precision, Rich in Detail

Otter adopts the state-of-the-art structure-light stereo-matching algorithm and optical design to faithfully reproduce the authentic texture and contours of objects.

The scanning precision up to 0.02mm ensures every detail is sharp and clear.

Anti-shake, Smooth and Efficient Scanning

Scanning speed up to 20 fps

Equipped with One-Shot 3D imaging technology, the CR-Scan Otter is naturally stabilized and less likely to tracking loss. Fast backtracking speed ensures smoother handheld scanning.



Scan Black/Metal Objects Without Spraying

Even without scanning spray, you can scan cars, car parts, tires, and other black/metal objects to get the desired model effect.

Full-Color Scanning, True-to-Life Reproduction

24-bit Full-Color Scanning

Equipped with a million-pixel full-color RGB camera and an exclusive color mapping algorithm, ensuring exceptional capture of model details and colors.

Clear Capture with Built-in Lights

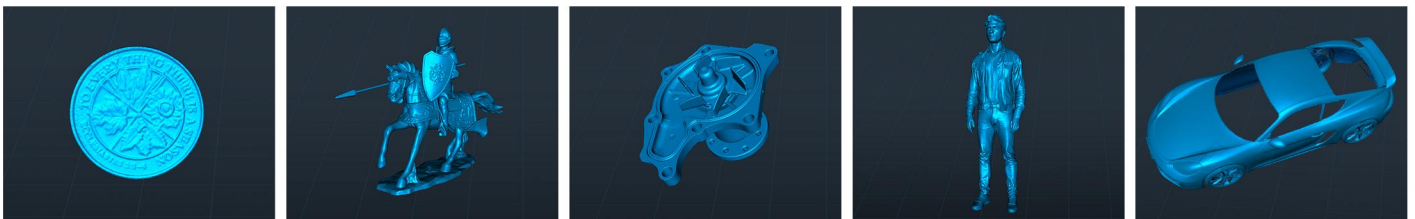
Even in low-light environments this allows for the most realistic texture effects. Two supplemental LEDs help precisely capture details, faithfully reproducing the color and texture of objects.

Cross-platform Compatibility, Powerful Features

Cross-platform (Windows, macOS) operation, easy to use. Otter will come with new accessories to achieve wireless scanning, compatible with iOS and Android.* CREALITYScan is a professional 3D scanning software with excellent user-friendliness and powerful image and point cloud processing capabilities. *Note: The CR-Scan Otter will be compatible with Android & IOS equipped with the upcoming accessory to realize wireless scanning.

Elevate Scanning Experience

Ring indicator lights provide real-time scanning status; CR-Scan Otter comes with touch buttons and audible feedback, making scanning seamless. It allows for real-time exposure adjustment and offers comfortable and simple operation.



Accuracy	Up to 0.02mm @ 60mm[1]	Color Supplemental Light	2 white LEDs
3D Resolution	0.05-2mm	Marker Recognition Enhancement	8 infrared LEDs
Scanning Speed	Up to 20fps	Laser Safety	Class I (eye safe)
Min. Scan Volume	10mm x 10mm x 10mm	System Support	Windows/macOS <small>Wireless scanning accessories are required for iPhone iOS/Android</small>
Single Capture Range	Max. 1350x840mm@1000mm	Wireless Scanning	Supported <small>in conjunction with future wireless scanning accessories*</small>
Technology	Infrared structured light	Operating Temperature	-10°C to 40°C
Working Distance	110mm-1000mm	Operating Humidity	0-90% RH
Color Mapping	YES	Input Power	5V 3A
Alignment Modes	Geometry/Marker/Texture	Data Interface	Type C/USB3.0/USB2.0
Output Format	OBJ/STL/PLY	Device Dimensions	165mmx37mmx59mm
IMU	YES	Device Weight	390g

