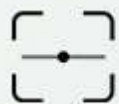


CR-Scan Ferret SE

The best choice for 3D scanner beginners



Accuracy
0.1mm



24-bit
full-color



Anti-shake
tracking



Are you a beginner, considering the purchase of a 3D scanner but worried about the price and practicality?

Price?

Software?

Practicality?



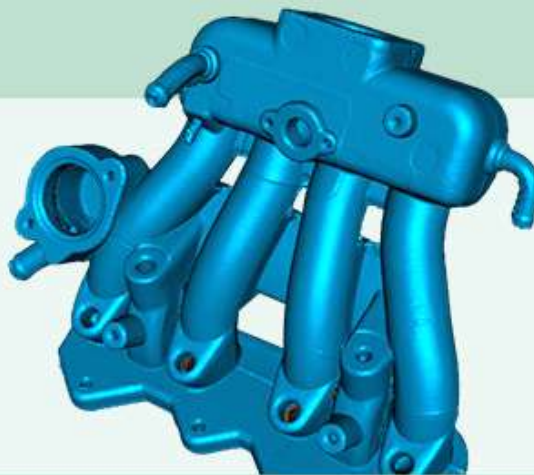
CR-Scan Ferret SE

**The ideal choice
for 3D scanner
beginners**



Put your concerns to rest with the CR-Scan Ferret SE. Thanks to its high accuracy, user-friendly software, and cost-effectiveness, your journey into 3D scanning will be a joyous one. In no time, you'll be creating precise, ready-to-use 3D models.

Up to
0.1 mm
accuracy



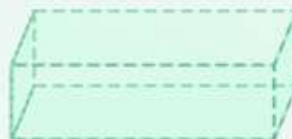
User-friendly software



CreaScan

Flexible scanning range

150-2000mm



24-bit
full-color
scanning



Up to
30fps
scanning
speed



Cost-effective



Up to 0.1 mm High Accuracy

The CR-Scan Ferret SE boasts an impressive accuracy of up to 0.1mm. Additionally, its 0.16mm resolution can capture extensive dimensional data and intricate details to shape highly realistic models.

Accuracy

0.1mm

Resolution

0.16mm



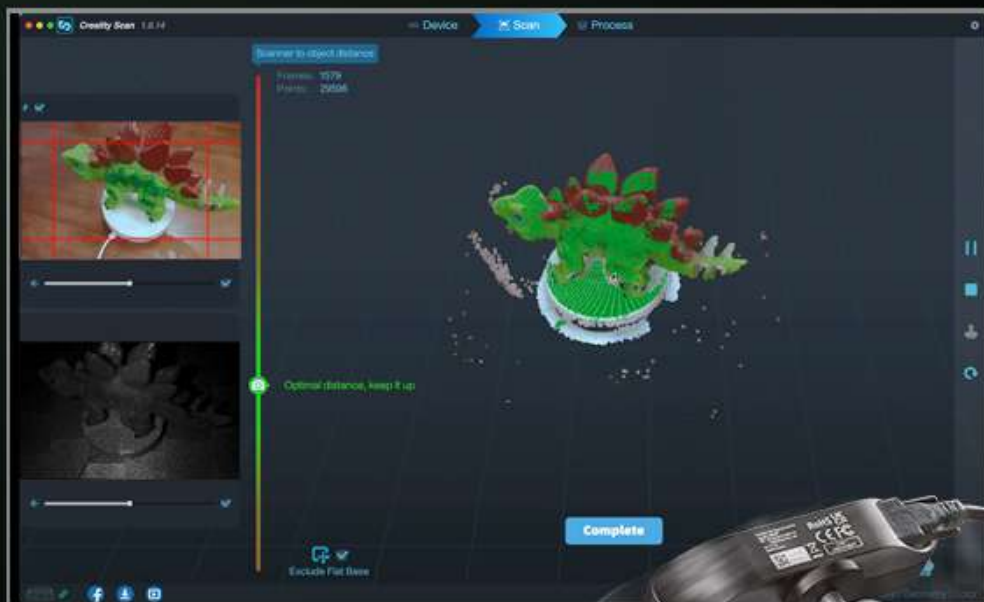
Flexible Scanning Range

CR-Scan Ferret SE provides a flexible scanning range of 150mm to 2000mm, satisfying a various scanning needs. It easily handles the scanning of medium to large objects with a single capture range of up to 560*820mm, enhancing the overall scanning efficiency.



Anti-shake Tracking

Equipped with the new one-shot 3D imaging technology, CR-Scan Ferret SE ensures smooth, error-free scanning results even with shaky hands or rapid movements. This advanced feature enhances tracking efficiency and significantly increases the success rate of scans.



24-bit Full-color Scanning

The built-in 2MP high-resolution color camera captures vibrant 3D models in their original colors, vividly bringing every intricate detail to life.



Human Face & Body Scanning

CR-Scan Ferret SE is equipped with a unique face mapping algorithm that can restore detailed features of the face to get a vivid model. It's hassle-free to build a model for yourself and your loved-ones.



No Color

Color



Scan Black/Metal Objects without Spraying

Without scanning spray, you can scan cars*, car parts, tires, and other black/metal objects to get the desired model effect.

*How to scan cars: select the texture mode for scanning the car after marking its surface.



Compatible with Mac & Windows

The CR-Scan Ferret SE, compatible with both Mac and Windows operating systems, significantly enhances image processing capabilities and scanning efficiency based on the powerful CPU of desktop computer.



Windows



macOS

*Note: The CR-Scan Ferret SE can support Mac(M1, M2, Intel chip)



User-friendly Software

The CrealityScanner is a professional platform featuring the user-friendliness and a robust image-processing capacity. With its step-by-step tutorial, one-click model processing, and model editing capabilities, it provides an effortless start to your scanning journey.



One-click processing



Multiple scans alignment



Point-cloud Editing

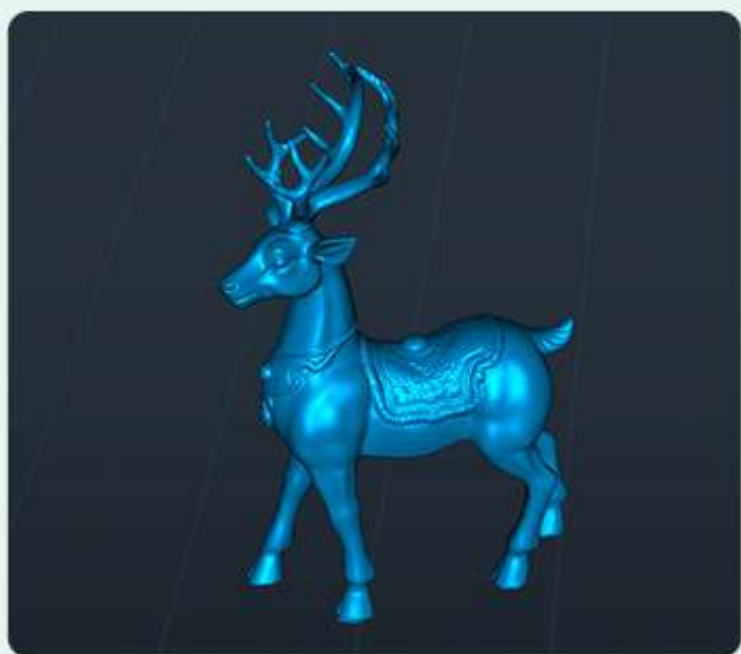
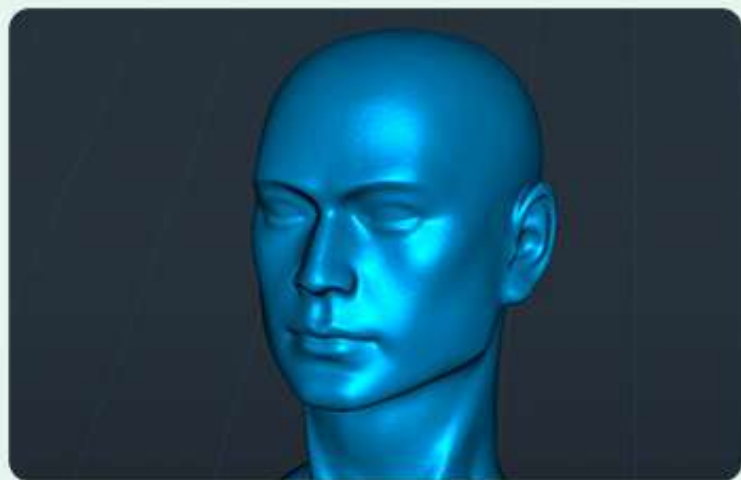
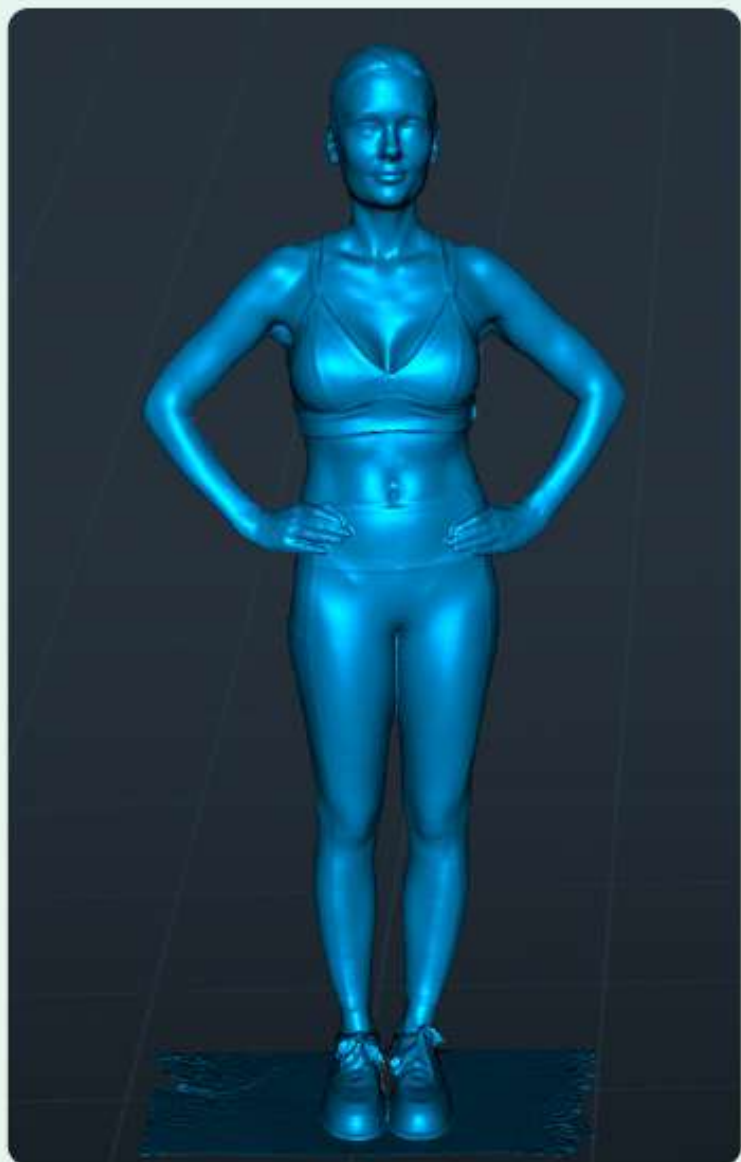


Marker mode



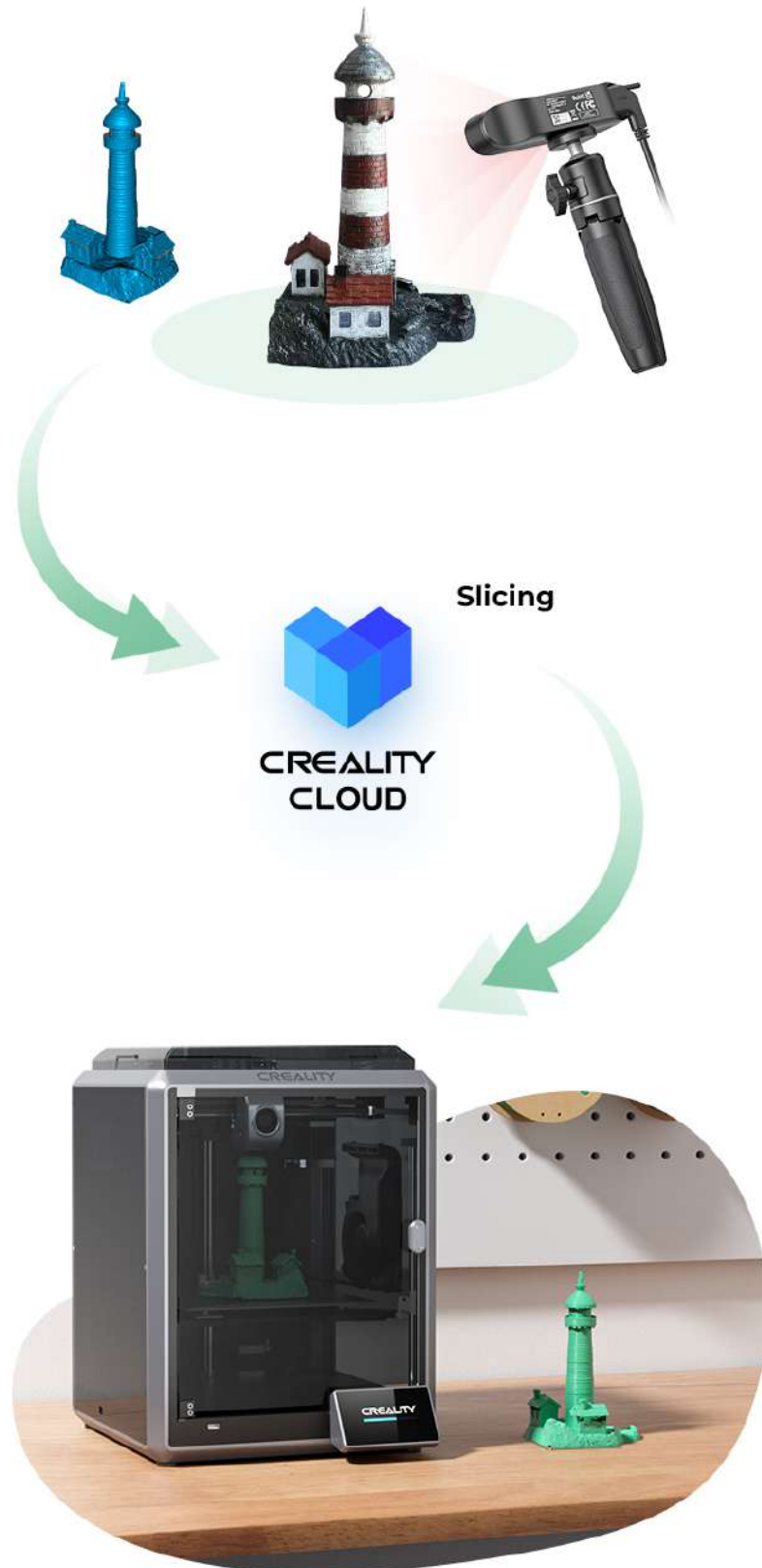
Face & Body mode





One-stop 3D Printing Experience

Creality is dedicated to providing you with a seamless 3D printing experience. Our comprehensive services range from 3D scanning, Crealitycloud to various 3D printing machines, all designed to make the process of 3D printing more simple and enjoyable.



Specifications

Product Name: CR-Scan Ferret SE

Working distance: 150mm – 700mm

Single Capture Range: 560mm x 820mm@700mm

Single- frame Precision: Up to 0.1mm

Scanning Speed: Up to 30fps

Data transmission : USB3.0 Type-C

Minimum scan volume: 150mm×150mm×150mm

Minimum point distance/Resolution: 0.16mm

Scanner Weight: 105g

Scanner Dimensions: 120*30*26mm

Operating Systems: Windows, MAC
